



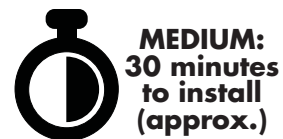
BATTISTINIS CUSTOM CYCLES


1109 LANGTON DRIVE
SAN RAMON, CA 94582
925.270.4211 TECH LINE
WWW.BATTISTINISUSA.COM

CHROME BILLET GRIPS & BLACK ANODIZED BILLET GRIPS

BILL OF MATERIALS

Quantity	Part
1	Billet grip, left, chrome
1	Billet grip, right, chrome
1	Bolt, bearing mount
1	Bearing
1	Polymer 1 (small)
1	Ploymer 2, (large)
1	Hex nut, zinc plated 5/16"-18
1	Washer, stainless steel
3	Set screw, stainless steel, 10-32 x 3/16"



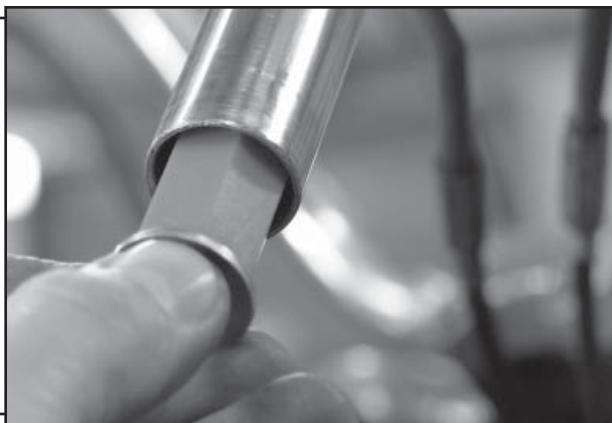
 **MAINTENANCE:** To keep your new grips looking their best, apply a high-quality chrome polish to them (for chrome grips) or clean them thoroughly (for black grips) every time you detail your motorcycle.

WARNING: Your safety depends on the correct installation of this kit. Use appropriate service manual procedures. If the procedures are not within your capability or you do not have the correct tools, have a trained mechanic/technician install this part for you. Improper installation of this part could result in injury or death.

STEP 1: Follow the procedure listed in the appropriate service manual for your year and model of motorcycle to remove the existing grip. Clean both the inside and outside of the handlebar end, ensuring that the inside of the bar is dry and free of oil or grease. Two hex-shaped polymer inserts are included with this kit. Choose the one that best fits your handlebars and install the insert that fits snugly into the end of your handlebars as shown. We recommend cutting 1/2" off of the bar end to ensure that the new grip is correctly positioned inside the hand control. Optionally, you can move your hand controls down the bar end 1/2" should you not wish to cut your handlebars.



STEP 1A - NOTE: Not all handlebars are constructed from tubing that has the same inside diameter. For example, OEM Harley-Davidson handlebars use thin-wall stainless steel tubing. If your motorcycle does **NOT** have OEM Harley-Davidson handlebars made of thin-wall stainless steel tubing, proceed to **Step 2**.





STEP 1B - NOTE: With this type of handlebar, it may be necessary to pre-tighten the bearing mount bolt in order to distort the polymer insert enough to provide a snug fit, as shown.



STEP 2: The large stainless steel washer will stop against the bar end when the insert is fully installed. As shown, tighten the bearing mount bolt. Avoid over-tightening this bolt so as not to damage the polymer insert.



STEP 3: There is a small ball bearing pressed into the end of the throttle grip. Slide the throttle grip over the handlebar end until the bearing registers onto the bearing mount bolt as shown. Install the throttle cables onto the Battistinis grips as per the procedure outlined in the appropriate service manual for your year and model of motorcycle. Check for proper throttle operation before riding your motorcycle.



STEP 4: Remove the existing left-side grip and clean the handlebar end if necessary. The new grip is held in place with three stainless steel set screws. Use a drop of blue Loctite 242 on either the set screw threads or in each of the threaded holes in the grip. Slide the grip up the handlebar and position it to your preference. Tighten each of the three set screws a little at a time to ensure that they are all tightened uniformly, as shown. We recommend re-checking the set screws periodically to ensure they stay tight. Now you are ready to enjoy your new Battistinis billet grips.

